



Environment  
Agency

# The journey to good status

Kate Potter

Principal Officer - Biodiversity

15<sup>th</sup> June 2011

# River Basin Management Plans

- ➔ Produced every 6 years
- ➔ 2027 completion of the three plan cycles and achievement of WFD objectives
  - ➔ 2015 1<sup>st</sup> cycle complete
  - ➔ 2013-2015 review 1<sup>st</sup> cycle and prepare for 2<sup>nd</sup> cycle
  - ➔ 2021 review 2<sup>nd</sup> cycle and prepare for 3<sup>rd</sup> cycle

# 2015 Targets

## ⇒ South East RBMP

- ⇒ 23% at GES/GEP by 2015 (19% now)
- ⇒ additional 18% improving

## ⇒ Thames RBMP

- ⇒ 25% at GES/GEP by 2015 (23% now)
- ⇒ Additional 22% improving

## ⇒ National 2% stretch

# Evidence

## ➔ Low Confidence

- ➔ confirm failure
- ➔ reason for failure
- ➔ action required



Investigation

➔ Over 3000 investigations underway

# High Confidence

⇒ Pathway to Compliance

⇒ Catchment approach

⇒ Sector Engagement

⇒ LA factsheets



**ACTION!!**

# Catchment Approach

- ➔ new approach for South East RBD
- ➔ 'plans' to drive action
- ➔ develop shared visions with external partners
- ➔ EA single point of contact

# Pilot Catchments

- ➔ 10 nationally
- ➔ new and innovative ways of engaging
- ➔ galvanising co-ordinated action

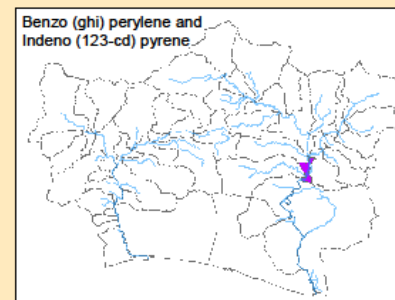
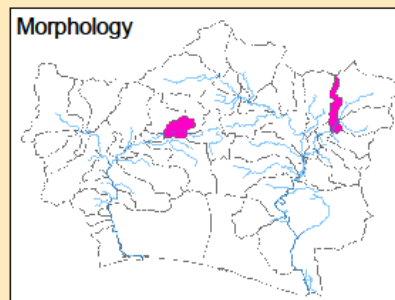
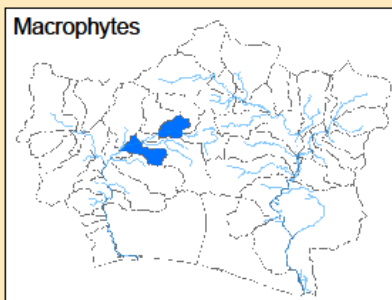
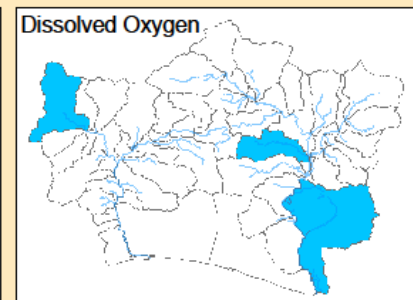
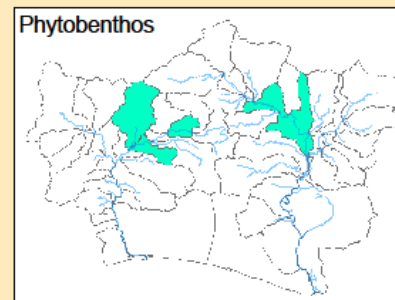
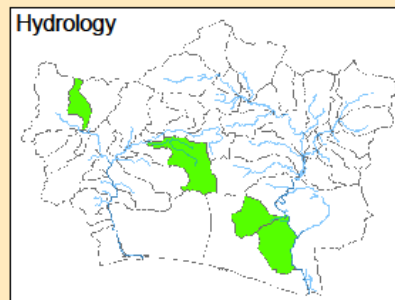
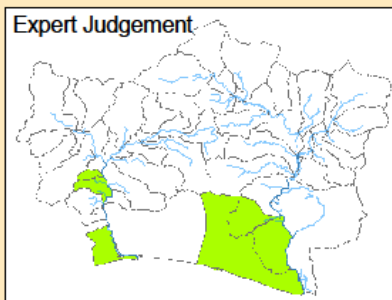
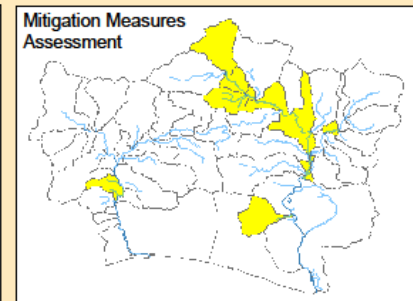
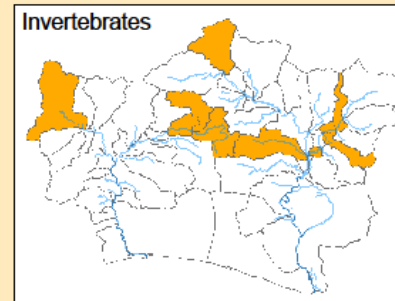
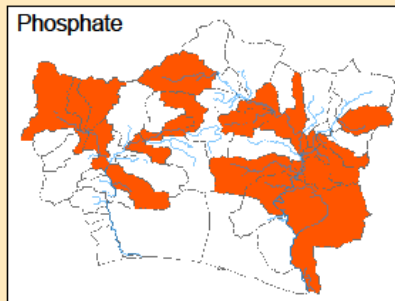
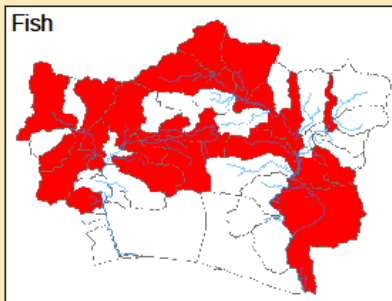
## ➔ Adur & Ouse (South East)

Cat Fuller [catherine.fuller@environment-agency.gov.uk](mailto:catherine.fuller@environment-agency.gov.uk)

## ➔ Lower Lee (Thames)

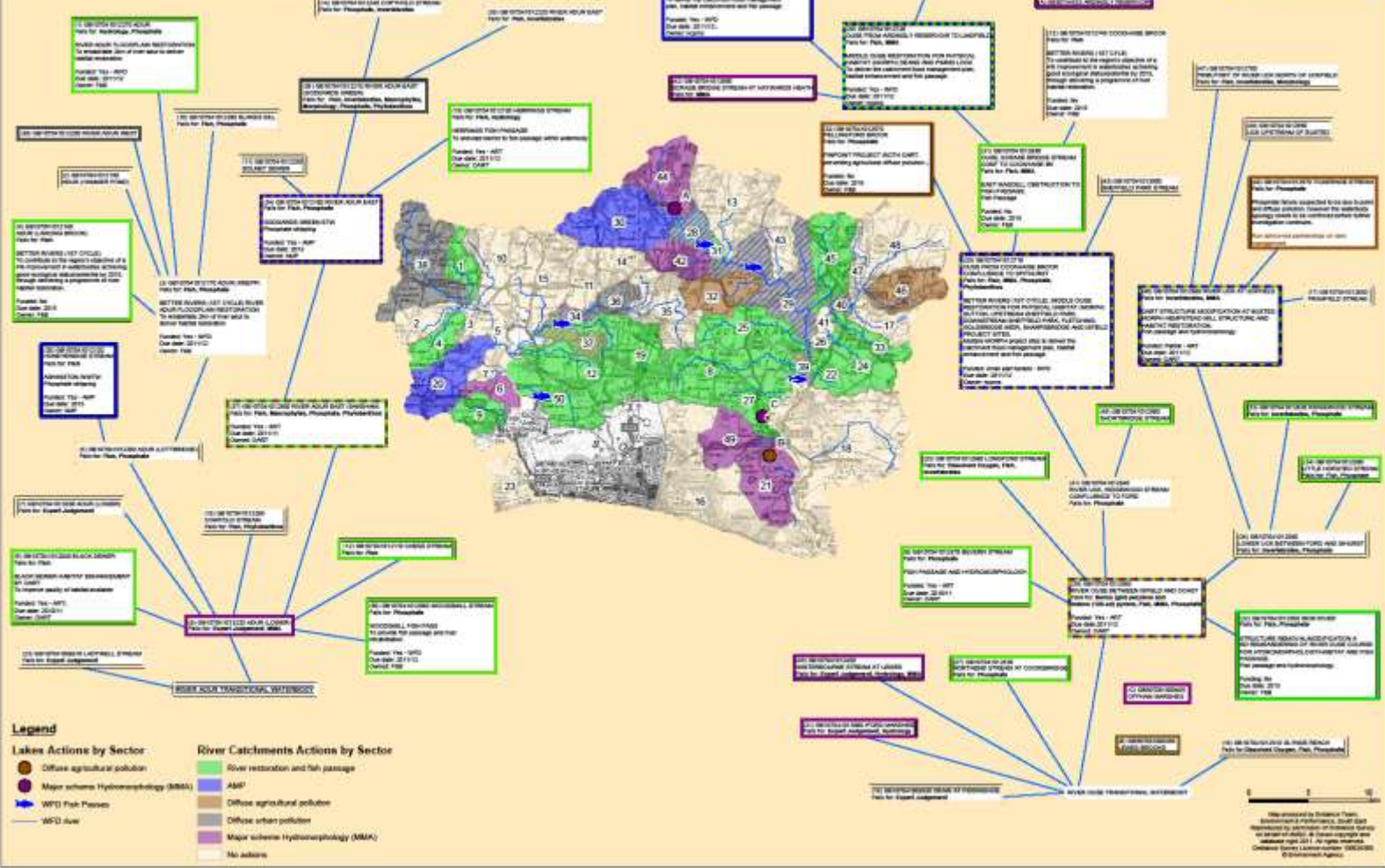
Sandra Spinks [sandra.spinks@environment-agency.gov.uk](mailto:sandra.spinks@environment-agency.gov.uk)

**Adur & Ouse catchment (SE River Basin District)  
Elemental failures by river sub-catchment**



Map produced by Data Quality Management,  
Southern Environment & Performance  
Reproduced by permission of Ordnance Survey  
on behalf of HMGC. © Crown copyright and  
database right 2011. All rights reserved.  
Ordnance Survey Licence number 100026960.  
© Environment Agency

# Adur & Ouse River Catchments and Lakes



This document is the property of the Environment Agency. It is not to be reproduced or transmitted in any form or by any means, electronic or mechanical, including photocopying and recording, or by any information storage and retrieval system, without the prior written permission of the Environment Agency.

# Pilot catchment next steps

- ➔ identify who we want to engage with, and why (June/July)
- ➔ establish a baseline with those stakeholders, against which we can evaluate success (by September)
- ➔ develop a shared vision and agree priorities with those stakeholders (by December)

# Sector Engagement - eNGO key contacts

## ➔ Liaison panel leads

- ➔ South East - Ian Hepburn, Steve Gilbert (deputy)
- ➔ Thames - Matt Jackson, Jason Debney, (Robert Oates)

## ➔ eNGO sector lead

- ➔ Kate Potter

# EA South East sector leads

- ➔ act as main point of contact
- ➔ maintain overview of sectors strengths, constraints and priorities
- ➔ provide support, advice and evidence

# What we want from you

- ➔ to understand whether you want to be involved
- ➔ help galvanising action across all sectors
- ➔ ideas for engaging with local communities
- ➔ what information you need
- ➔ key contacts, clear lines of communication

Kate Potter

[kate.potter@environment-agency.gov.uk](mailto:kate.potter@environment-agency.gov.uk)

(01903) 703954

Please note I only work Monday, Tuesday and Wednesday